

%CreditsPassed and CountEnrolments by AcadYear, ModuleYearLevel and FactOfModule

ModuleYearLevel 1 2 3 4



Percentage credits passed per faculty and race for 2018 to 2023 combined (per module year level 1,2 and 3)

RaceSA FactOfModule	Black African		Coloured		Indian		International		White		Total	
	Enrolments	%CreditsPassed	Enrolments	%CreditsPassed	Enrolments	%CreditsPassed	Enrolments	%CreditsPassed	Enrolments	%CreditsPassed	Enrolments	%CreditsPassed
▲												
Agrisciences	1546	77.0% 	823	82.7% 	87	81.9% 	240	86.9% 	9393	87.8% 	12089	85.9%
Arts And Social Sciences	14564	73.3% 	25889	75.0% 	1467	88.0% 	3212	84.8% 	39132	88.7% 	84264	81.7%
Econ and Management Sciences	15018	62.3% 	13814	75.2% 	3390	75.5% 	6703	71.6% 	67552	83.8% 	106477	78.5%
Education	3664	85.5% 	6637	87.6% 	165	93.0% 	530	90.8% 	7320	93.8% 	18316	89.8%
Engineering	5759	49.1% 	4227	66.0% 	1729	64.1% 	2552	68.7% 	21188	82.3% 	35455	72.9%
Law	1180	72.6% 	1969	75.9% 	332	82.8% 	504	78.9% 	6620	84.8% 	10605	81.5%
Medicine And Health Sciences	3863	94.5% 	4184	96.1% 	1164	97.5% 	270	95.8% 	6960	97.4% 	16441	96.4%
Science	17966	64.3% 	13228	75.0% 	4275	74.1% 	5389	76.4% 	59333	83.6% 	100191	78.1%
Theology	1664	66.3% 	2823	67.3% 			108	90.0% 	790	77.4% 	5385	69.0%
Total	65224	69.0%	73594	77.3%	12609	79.1%	19508	76.4%	218288	85.6%	389223	80.5%

Module Year
Level: 1

RaceSA FactOfModule	Black African		Coloured		Indian		International		White		Total	
	Enrolments	%CreditsPassed	Enrolments	%CreditsPassed	Enrolments	%CreditsPassed	Enrolments	%CreditsPassed	Enrolments	%CreditsPassed	Enrolments	%CreditsPassed
▼												
Econ and Management Sciences	7308	67.4% 	9646	74.3% 	2184	74.7% 	4617	75.4% 	50652	85.0% 	74407	80.9%
Arts And Social Sciences	8796	76.6% 	19085	79.8% 	1123	89.6% 	2697	88.9% 	36896	90.7% 	68597	85.9%
Science	5799	70.7% 	5691	78.4% 	1788	78.8% 	2713	78.3% 	31653	87.5% 	47644	83.5%
Engineering	3105	63.4% 	3431	73.6% 	1313	73.9% 	2211	76.5% 	23166	87.1% 	33226	82.2%
Agrisciences	3935	71.8% 	3579	78.1% 	618	85.9% 	937	87.1% 	20358	89.6% 	29427	85.5%
Medicine And Health Sciences	4206	92.8% 	5322	94.4% 	1456	97.2% 	472	92.5% 	10619	97.6% 	22075	95.6%
Education	1873	90.8% 	5411	92.2% 	161	92.1% 	412	93.5% 	8830	95.9% 	16687	94.0%
Law	1516	68.3% 	2793	74.6% 	398	78.4% 	717	80.7% 	9079	87.1% 	14503	82.2%
Theology	1325	74.7% 	2311	72.0% 			82	80.2% 	1027	82.7% 	4745	75.1%
Total	37863	75.2%	57269	80.8%	9041	83.4%	14858	80.1%	192280	88.4%	311311	84.8%

Module Year
Level: 2

RaceSA FactOfModule	Black African		Coloured		Indian		International		White		Total	
	Enrolments	%CreditsPassed	Enrolments	%CreditsPassed	Enrolments	%CreditsPassed	Enrolments	%CreditsPassed	Enrolments	%CreditsPassed	Enrolments	%CreditsPassed
▼												
Econ and Management Sciences	4645	67.2% 	6882	73.6% 	1548	78.9% 	3630	81.2% 	43587	87.4% 	60292	83.4%
Arts And Social Sciences	4578	80.8% 	11284	84.6% 	754	86.6% 	1813	92.1% 	25937	93.1% 	44366	89.5%
Engineering	3260	69.9% 	4063	76.6% 	1388	80.7% 	2639	80.1% 	28063	89.2% 	39413	85.3%
Agrisciences	2414	76.7% 	2426	85.7% 	317	93.8% 	779	88.3% 	18144	94.7% 	24080	91.7%
Science	2707	77.0% 	3420	85.1% 	756	87.9% 	1095	84.1% 	14668	92.5% 	22646	89.0%
Medicine And Health Sciences	3400	89.9% 	4945	92.2% 	1295	94.4% 	519	95.0% 	10768	95.7% 	20927	93.5%
Education	576	92.4% 	4491	94.1% 	149	99.7% 	151	98.2% 	8127	97.6% 	13494	96.2%
Law	745	69.4% 	1497	79.5% 	145	87.5% 	301	83.5% 	4491	88.6% 	7179	84.4%
Theology	833	83.4% 	1516	87.0% 			85	98.1% 	1086	91.9% 	3520	87.9%
Total	23158	77.4%	40524	83.5%	6352	86.5%	11012	84.3%	154871	90.8%	235917	87.7%

Module Year
Level: 3

Percentage credits passed per faculty and gender for 2018 to 2023 combined (per module year level 1,2 and 3)

Module Year
Level: 1

Gender FactOfModule ▲	Female		Male		Total	
	Enrolments	%CreditsPassed	Enrolments	%CreditsPassed	Enrolments	%CreditsPassed
Agrisciences	4169	88.8%	8097	84.5%	12266	86.0%
Arts And Social Sciences	62633	83.8%	22913	75.7%	85546	81.7%
Econ and Management Sciences	51661	80.8%	56472	76.5%	108133	78.5%
Education	14446	91.5%	4391	84.2%	18837	89.9%
Engineering	10802	69.5%	25229	74.5%	36031	73.0%
Law	6792	83.6%	4026	78.2%	10818	81.6%
Medicine And Health Sciences	12678	96.7%	3954	95.4%	16632	96.4%
Science	50712	80.0%	51348	76.3%	102060	78.2%
Theology	2929	69.9%	2506	67.9%	5435	69.0%
Total	216822	83.1%	178936	77.1%	395758	80.5%

Module Year
Level: 2

Gender FactOfModule	Female		Male		Total ▼	
	Enrolments	%CreditsPassed	Enrolments	%CreditsPassed	Enrolments	%CreditsPassed
Econ and Management Sciences	35855	83.9%	39362	78.1%	75217	80.9%
Arts And Social Sciences	52091	87.4%	17298	81.4%	69389	85.9%
Science	21903	86.4%	26448	81.0%	48351	83.5%
Engineering	9273	82.7%	24299	82.0%	33572	82.2%
Agrisciences	15740	86.2%	14093	85.0%	29833	85.6%
Medicine And Health Sciences	16694	95.7%	5618	95.0%	22312	95.6%
Education	13626	95.2%	3232	88.8%	16858	94.0%
Law	9625	84.2%	5129	78.9%	14754	82.2%
Theology	2435	77.6%	2344	72.4%	4779	75.0%
Total	177242	87.5%	137823	81.3%	315065	84.8%

Module Year
Level: 3

Gender FactOfModule	Female		Male		Total ▼	
	Enrolments	%CreditsPassed	Enrolments	%CreditsPassed	Enrolments	%CreditsPassed
Econ and Management Sciences	28606	84.7%	32074	82.2%	60680	83.4%
Arts And Social Sciences	31804	90.7%	12984	85.8%	44788	89.5%
Engineering	10824	86.9%	28818	84.7%	39642	85.3%
Agrisciences	11660	92.9%	12666	90.6%	24326	91.8%
Science	12769	90.7%	10159	86.9%	22928	89.0%
Medicine And Health Sciences	16040	93.8%	5067	92.7%	21107	93.5%
Education	11307	97.0%	2259	92.6%	13566	96.3%
Law	4935	85.4%	2344	82.5%	7279	84.5%
Theology	1753	89.7%	1784	86.3%	3537	88.0%
Total	129698	89.6%	108155	85.2%	237853	87.7%

Percentage credits passed per faculty and SES (socio-economic status) for 2018 to 2023 combined (per module year level 1,2 and 3)

Module Year
Level: 1

SESGroup FactOfModule	1.None		2.Low		3.Medium		4.High		Total	
	Enrolments	%CreditsPassed	Enrolments	%CreditsPassed	Enrolments	%CreditsPassed	Enrolments	%CreditsPassed	Enrolments	%CreditsPassed
Agrisciences	5048	88.0%	5574	86.6%	576	84.6%	1089	74.3%	12287	86.0%
Arts And Social Sciences	33820	87.1%	30303	83.6%	7968	74.5%	13737	68.4%	85828	81.7%
Econ and Management Sciences	59793	81.9%	33715	79.0%	6603	69.4%	8099	59.6%	108210	78.5%
Education	7237	91.2%	5634	92.3%	2053	84.5%	3970	86.8%	18894	89.8%
Engineering	20132	79.0%	10175	73.8%	2140	61.4%	3613	45.0%	36060	73.0%
Law	6187	84.7%	3391	80.1%	612	77.3%	636	63.3%	10826	81.6%
Medicine And Health Sciences	7536	97.8%	5455	96.4%	1412	93.7%	2235	92.9%	16638	96.4%
Science	51920	82.4%	31587	78.4%	7047	71.8%	11653	63.1%	102207	78.2%
Theology	1294	72.7%	1075	74.9%	948	67.0%	2134	64.5%	5451	69.0%
Total	192967	84.2%	126909	81.5%	29359	74.0%	47166	67.2%	396401	80.5%

Module Year
Level: 2

SESGroup FactOfModule	1.None		2.Low		3.Medium		4.High		Total	
	Enrolments	%CreditsPassed	Enrolments	%CreditsPassed	Enrolments	%CreditsPassed	Enrolments	%CreditsPassed	Enrolments	%CreditsPassed
Econ and Management Sciences	43190	83.3%	24359	80.5%	3844	72.3%	3866	65.8%	75259	80.9%
Arts And Social Sciences	30604	88.9%	26333	86.5%	5225	81.2%	7403	74.1%	69565	85.9%
Science	27266	86.0%	15155	83.7%	2465	77.8%	3514	68.2%	48400	83.5%
Engineering	20690	84.9%	9843	81.6%	1361	72.5%	1697	61.0%	33591	82.2%
Agrisciences	14268	88.6%	11175	86.7%	1857	75.6%	2568	72.2%	29868	85.6%
Medicine And Health Sciences	11015	97.2%	7792	94.5%	1643	92.8%	1882	92.6%	22332	95.5%
Education	6859	95.6%	6228	94.3%	1357	92.4%	2433	89.9%	16877	94.1%
Law	8621	86.0%	4631	80.5%	762	71.4%	761	61.9%	14775	82.2%
Theology	1292	74.6%	981	82.6%	965	71.5%	1554	73.1%	4792	75.1%
Total	163805	87.0%	106497	85.0%	19479	79.1%	25678	73.8%	315459	84.8%

Module Year
Level: 3

SESGroup FactOfModule	1.None		2.Low		3.Medium		4.High		Total	
	Enrolments	%CreditsPassed	Enrolments	%CreditsPassed	Enrolments	%CreditsPassed	Enrolments	%CreditsPassed	Enrolments	%CreditsPassed
Econ and Management Sciences	36004	86.1%	20321	82.1%	2129	72.2%	2254	66.4%	60708	83.4%
Arts And Social Sciences	21287	92.0%	17075	89.4%	3025	82.7%	3467	80.7%	44854	89.5%
Engineering	24288	87.3%	12223	84.7%	1569	77.3%	1597	67.8%	39677	85.3%
Agrisciences	11795	94.1%	9568	92.7%	1275	85.5%	1709	76.0%	24347	91.8%
Science	12071	91.6%	7987	88.7%	1331	82.1%	1570	76.3%	22959	89.0%
Medicine And Health Sciences	10566	93.7%	7600	94.5%	1443	89.7%	1505	92.2%	21114	93.5%
Education	4730	97.4%	5804	96.9%	1067	94.1%	1975	92.9%	13576	96.3%
Law	4177	86.9%	2428	83.2%	363	76.3%	321	71.7%	7289	84.5%
Theology	1135	88.2%	784	87.0%	769	86.5%	861	90.0%	3549	88.0%
Total	126053	89.4%	83790	87.6%	12971	81.8%	15259	78.7%	238073	87.7%

Hurdle modules (based on % credits passed of less than 65%) per faculty and race for 2018 to 2023 combined

Undergraduate Bachelor Degrees:

RaceSA FactOfModule	Black African		Coloured		Indian		International		Unknown		White		Total Enrol	%Credits Passed
	Enrol	%CreditsPassed	Enrol	%CreditsPassed	Enrol	%CreditsPassed	Enrol	%CreditsPassed	Enrol	%CreditsPassed	Enrol	%CreditsPassed		
<input type="checkbox"/> Arts And Social Sciences														
Social Work 178	269	44.6%	384	50.5%	3	66.7%	28	71.4%	12	33.3%	92	80.4%	788	52.5%
<input type="checkbox"/> Theology														
Church history & church polity 143	159	56.5%	249	49.5%	2	0.0%	8	66.7%	6	100.0%	99	71.3%	523	56.9%
Old and New Testament 144	199	57.8%	352	55.1%	2	0.0%	8	75.0%	8	62.5%	104	67.3%	673	57.9%
Old and New Testament 114	211	53.6%	360	54.2%	2	0.0%	9	100.0%	6	100.0%	101	77.2%	689	58.2%
Systematic Theology 212	108	50.9%	174	56.3%			7	71.4%	4	75.0%	92	76.1%	385	60.0%
Systematic Theology 245	131	58.8%	259	54.1%			6	83.3%	4	75.0%	101	75.2%	501	60.1%
New Testament 262	50	60.0%	105	51.4%			3	100.0%	2	100.0%	86	80.2%	246	64.2%
<input type="checkbox"/> Science														
Mathematics 154	66	25.8%	28	32.1%	29	48.3%	26	46.2%	14	57.1%	217	65.4%	380	53.2%
Physics 144	293	31.1%	154	50.0%	46	58.7%	66	43.9%	27	74.1%	720	69.6%	1306	57.0%
Mathematics 324	32	46.9%	17	70.6%	9	55.6%	9	55.6%	5	0.0%	146	62.3%	218	58.7%
Chemistry 254	81	37.0%	49	53.1%	9	66.7%	16	50.0%	6	50.0%	196	73.0%	357	60.5%
Mathematics 278	67	46.3%	66	51.5%	21	66.7%	31	61.3%	10	50.0%	325	69.2%	520	63.1%
Chemistry 264	171	40.9%	135	53.3%	21	71.4%	45	57.8%	23	69.6%	641	72.9%	1036	64.3%
<input type="checkbox"/> Econ and Management Sciences														
Mathematical Statistics 214	145	40.0%	133	48.1%	109	54.1%	155	52.9%	35	48.6%	1305	65.5%	1882	60.3%
Financial accounting 179	65	58.5%	66	72.7%	13	53.8%	5	80.0%	4	75.0%	81	56.8%	234	62.4%
<input type="checkbox"/> Engineering														
Engineering drawing 143	101	56.4%	50	62.0%	23	34.8%	27	74.1%	7	85.7%	121	76.0%	329	65.0%

Undergraduate Diploma/Certificates:

RaceSA FactOfModule	Black African		Coloured		Indian		Unknown		White		Total Enrol	%Credits Passed
	Enrol	%CreditsPassed	Enrol	%CreditsPassed	Enrol	%CreditsPassed	Enrol	%CreditsPassed	Enrol	%CreditsPassed		
<input type="checkbox"/> Econ and Management Sciences												
Managing Institutional Capaci 171	116	35.3%	97	67.0%	2	50.0%	5	60.0%	10	80.0%	230	51.3%
Man Institutional performance 191	108	38.9%	103	78.6%	3	66.7%	5	40.0%	9	77.8%	228	58.8%
Compl and control: Budgeting 121	98	44.9%	86	77.9%	3	66.7%	5	60.0%	10	70.0%	202	60.9%

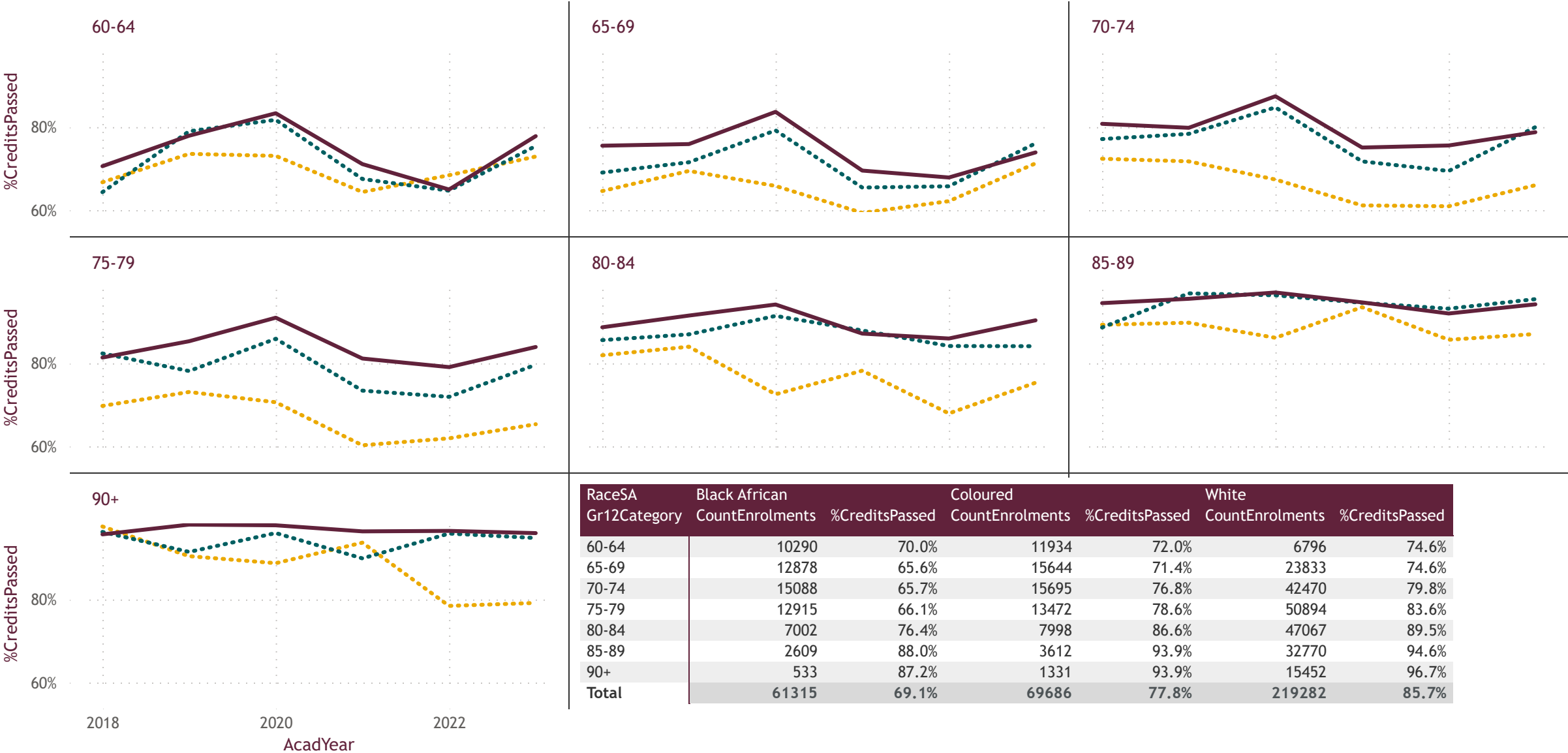
Percentage credits passed per ECP programme and race for 2018 to 2023 combined

RaceSA Faculty	Black African Enrolments	%CreditsPassed	Coloured Enrolments	%CreditsPassed	Indian Enrolments	%CreditsPassed	White Enrolments	%CreditsPassed	Total Enrolments	%Credits Passed
▢ Arts And Social Sciences										
BA (Humanities)ECP(SS)	3074	73.7% 	5414	76.7% 	217	87.9% 	889	77.4% 	9594	76.0%
B in Social Work(ECP)(SS)	1847	82.1% 	3091	78.1% 			46	89.0% 	4984	79.7%
BA (Inter Studies)(ECP)(SS)	1065	73.3% 	1020	74.5% 	39	89.4% 	94	69.9% 	2218	74.0%
BA (Developm and Env) ECP(SS)	819	78.7% 	594	79.2% 	22	100.0% 	157	76.4% 	1592	78.9%
BA (Language and Cult ECP(SS)	291	66.3% 	667	74.8% 			90	88.0% 	1048	73.5%
BA (Huma Resource Man)ECP(SS)	224	83.2% 	180	63.4% 			201	90.1% 	605	79.6%
▢ Engineering										
BEng (Civil)(ECP)	1273	71.5% 	1322	77.7% 	81	64.3% 	518	86.6% 	3194	76.2%
BEng (Mechanical) ECP	682	73.3% 	798	83.0% 	280	75.0% 	614	79.0% 	2374	78.1%
BEng (Electr & Electron) ECP	686	75.1% 	808	78.5% 	109	75.7% 	590	76.9% 	2193	76.8%
BEng (Chem Eng) ECP	480	72.5% 	895	73.0% 	75	64.4% 	50	79.3% 	1500	72.6%
BEng (Industrial Engineer) ECP	435	70.4% 	402	81.6% 	45	75.6% 	296	74.0% 	1178	75.2%
BEng (Mechatronics) ECP	370	79.8% 	425	72.0% 	156	56.0% 	210	79.9% 	1161	73.9%
▢ Econ and Management Sciences										
BCom (Management Sciences) ECP	2612	61.9% 	3167	69.7% 	261	71.5% 	2604	74.0% 	8644	68.7%
▢ Agrisciences										
BScAgric (Plant and Soil S)ECP	602	66.8% 	374	74.6% 	36	57.3% 	525	88.3% 	1537	76.0%
BAgric(Agr-business Man)ECP	132	70.5% 	22	73.1% 	26	87.2% 	582	81.7% 	762	79.8%
BSc(For)(For and Wood Sc) ECP	276	60.3% 	133	74.4% 	12	68.8% 	324	87.0% 	745	75.3%
BScAgric (Vitic and Oenol) ECP	62	81.8% 	232	81.4% 			348	88.0% 	642	85.1%
BScAgric(Animal Science) ECP	174	83.4% 	156	92.3% 			309	83.9% 	639	85.9%
BSc Cons Ecol (ECP)	185	78.9% 	122	75.5% 			312	88.5% 	619	83.3%
BSc (Food Science) ECP	124	86.2% 	133	83.5% 	90	88.4% 	131	76.3% 	478	83.2%
BScAgric (Agri Econom)ECP	160	77.7% 	52	90.1% 	46	92.9% 	204	80.9% 	462	82.3%
▢ Science										
BSc (Molecul Biol and Biot)ECP	510	75.8% 	870	78.5% 	180	90.2% 	213	85.6% 	1773	79.7%
BSc (Human Life Sciences) ECP	689	77.8% 	608	86.4% 	40	100.0% 	152	84.3% 	1489	82.6%
BSc (Mathematical Scienc) ECP	304	57.8% 	243	63.3% 	47	70.6% 	58	63.3% 	652	61.2%
BSc (Earth Science)ECP	276	64.7% 	211	89.9% 			46	91.0% 	533	76.9%
BSc (Chemistry) ECP	296	67.7% 	153	69.6% 	34	76.2% 	42	87.5% 	525	70.3%
BSc (Sport Science) ECP	6	100.0% 	75	89.4% 			146	66.2% 	227	74.6%
▢ Theology										
BTh (ECP)	143	68.0% 	227	66.9% 			23	72.1% 	393	67.6%
BTh (Youth work) ECP	158	73.5% 	175	59.4% 					333	66.0%

Percentage credits passed per grade 12 average for 2018 to 2023 combined (per module year level 1)

%CreditsPassed by AcadYear, RaceSA and Gr12Category

RaceSA ● Black African ● Coloured ● White



CountEnrolments by RaceSA, ClassPass and FactOfModule

ClassPass ● Class 1 Pass (>75%) ● Class 2 Pass (60-74%) ● Class 3 Pass (50-59%)

